



DIRECTIONAL DRILLED HORIZONTAL EXTRACTION WELL INSTALLATION

DRY CLEANING FACILITY INDIANAPOLIS, INDIANA

Client: Private Consultant
Contaminants: Chlorinated Hydrocarbons
Impacted Matrix: Shallow Soils
Technology: Directional Drilling

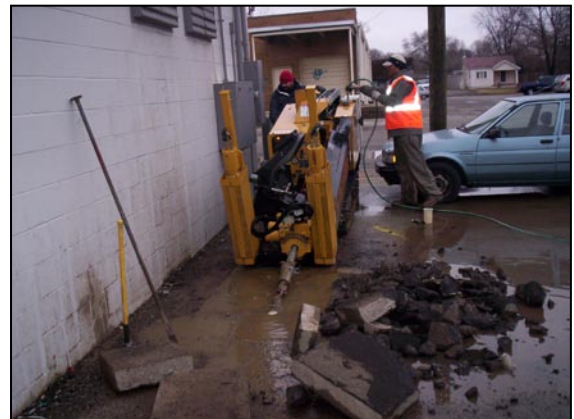
PROJECT OVERVIEW:

Specialty Earth Sciences, LLC (SE SCIENCES) was contracted to facilitate the installation of a 4" I.D. horizontal extraction well within a narrow alleyway, inaccessible by traditional drill rigs.

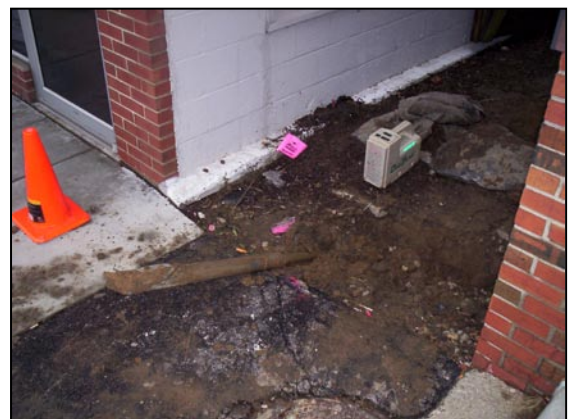
SE SCIENCES personnel completed all installation activities and site restorations within a one day time period.

Scope of Work Included:

- Installation, connection, and integration of (1) 50 foot horizontal extraction well screen; located 10 feet below ground surface.
- High logistical area, comprising: a 2.5 foot alleyway with water lines, gas lines, and a storm sewer intersecting the horizontal well placement.
- Limited resurfacing and restoration of directional drilling entry and exit pits.



Directional Drill with SE Sciences Operator.



Drill Tip Exiting Ground On Target.